

Anti-ADCY6 antibody (13-27) (STJ502058)

STJ502058

GENERAL INFORMATION

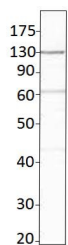
Product Type	Primary antibodies
Short Description	Rabbit polyclonal antibody anti-ADCY6 (13-27) is suitable for use in Confocal Microscopy, ELISA, Immunocytochemistry, Immunofluorescence, Immunohistochemistry, Immunoprecipitation and Western Blot research applications.
Applications	CM, ELISA, ICC, IF, IHC, IP, WB
Host/Source	Rabbit
Reactivity	Human, Mouse, Rat

PRODUCT PROPERTIES

Clonality	Polyclonal
Clone ID	
Concentration	0.59 µg/µl
Conjugation	Unconjugated
Purification	Affinity Purified
Dilution Range	WB: 1:500 DB: 1:10, 000 ELISA: 1:10, 000 IHC: 1:100-1:200 ICC: 1:100-1:200 IF: 1:100-1:200 CFM: 1:100-1:200
Formulation	
Isotype	IgG
Storage Instruction	Store at -20°C for long term storage. Avoid freeze-thaw cycles.

TARGET INFORMATION

Gene ID	25289
Gene Symbol	Adcy6
Uniprot ID	ADCY6_RAT
Immunogen	Synthetic peptide corresponding to N-terminal amino acids 13-27 of rat Particulate Adenylyl Cyclase 6 protein. Peptide was covalently modified and conjugated to KLH.
Immunogen Region	13-27
Specificity	
Immunogen Sequence	



Western blot with Anti-ADCY6 Antibody (STJ502058) with peptide on at 1:500 dilution in buffer.