

Anti-ADCY3 antibody (STJ502055)

STJ502055

GENERAL INFORMATION

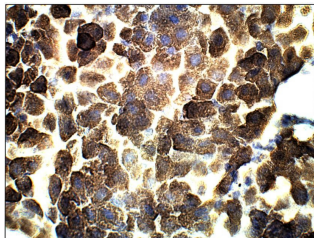
Product Type	Primary antibodies
Short Description	Rabbit polyclonal antibody anti-ADCY3 is suitable for use in ELISA, Immunohistochemistry, Immunoprecipitation and Western Blot research applications.
Applications	ELISA, IHC, IP, WB
Host/Source	Rabbit
Reactivity	Dog, Human, Mouse, Rat

PRODUCT PROPERTIES

Clonality	Polyclonal
Clone ID	
Concentration	0.68 µg/µl
Conjugation	Unconjugated
Purification	Affinity Purified
Dilution Range	WB: 1:500 DB: 1:10, 000 ELISA: 1:10, 000 IP: 1:200 IHC: 1:50-1:150
Formulation	
Isotype	IgG
Storage	Store at -20°C for long term storage. Avoid freeze-thaw cycles.
Instruction	

TARGET INFORMATION

Gene ID	109
Gene Symbol	ADCY3
Uniprot ID	ADCY3_HUMAN
Immunogen	Synthetic peptide generated against a sequence unique to PAC3 protein. All peptides were amidated before conjugation.
Immunogen Region	
Specificity	
Immunogen Sequence	



Immunohistochemistry of mouse liver with Anti-ADCY3 primary antibody (STJ502055) at 1:50 dilution in Buffer. Section was treated with DAB and Haematoxylin stain. Magnification is at 40X.