

Anti-TP63 antibody (1-100) (STJ502047)

STJ502047

GENERAL INFORMATION

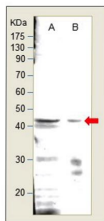
| | |
|--------------------------|--|
| Product Type | Primary antibodies |
| Short Description | Rabbit polyclonal antibody anti-TP63 (1-100) is suitable for use in ELISA, Immunoprecipitation and Western Blot research applications. |
| Applications | ELISA, IP, WB |
| Host/Source | Rabbit |
| Reactivity | Human, Mouse, Rat |

PRODUCT PROPERTIES

| | |
|----------------------------|---|
| Clonality | Polyclonal |
| Clone ID | |
| Concentration | 0.59-0.63 µg/µl |
| Conjugation | Unconjugated |
| Purification | Affinity Purified |
| Dilution Range | WB: 1:500 DB: 1:10, 000 ELISA: 1:10, 000 IP: 1:200 |
| Formulation | |
| Isotype | IgG |
| Storage Instruction | Store at -20°C for long term storage. Avoid freeze-thaw cycles. |

TARGET INFORMATION

| | |
|---------------------------|--|
| Gene ID | 8626 |
| Gene Symbol | TP63 |
| Uniprot ID | P63_HUMAN |
| Immunogen | Synthetic peptide taken within amino acid region 1-100 on human p63 protein. |
| Immunogen Region | 1-100 |
| Specificity | |
| Immunogen Sequence | |



Western blot with Anti-TP63 Antibody (STJ502047) with P63 peptide (A) and T47D cell (B) at 1:500 dilution in buffer.