

Anti-P2Y2 antibody (360-410) (STJ502044)

STJ502044

GENERAL INFORMATION

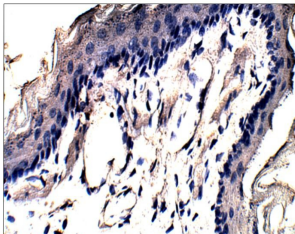
Product Type	Primary antibodies
Short Description	Rabbit polyclonal antibody anti-P2Y2 (360-410) is suitable for use in Confocal Microscopy, ELISA, Immunocytochemistry, Immunofluorescence, Immunohistochemistry, Immunoprecipitation and Western Blot research applications.
Applications	CM, ELISA, ICC, IF, IHC, IP, WB
Host/Source	Rabbit
Reactivity	Cat, Human, Mouse, Rat

PRODUCT PROPERTIES

Clonality	Polyclonal
Clone ID	
Concentration	0.52-0.68 µg/µl
Conjugation	Unconjugated
Purification	Affinity Purified
Dilution	WB: 1:500
Range	ELISA: 1:10, 000 IP: 1:200 IHC: 1:100 ICC: 1:100 IF: 1:100
Formulation	
Isotype	IgG
Storage Instruction	Store at -20°C for long term storage. Avoid freeze-thaw cycles.

TARGET INFORMATION

Gene ID	
Gene Symbol	
Uniprot ID	
Immunogen	Synthetic peptide taken within amino acid region 360-410 on rat P2Y2 protein.
Immunogen Region	360-410
Specificity	
Immunogen Sequence	



Immunohistochemistry of rat tissue with Anti-P2Y2 primary antibody (STJ502044) at 1:100 dilution in Buffer. Section was treated with DAB and Haematoxylin stain. Magnification is at 20X.