

## Anti-P2Y12 antibody (300-342) (STJ502041)

STJ502041

### GENERAL INFORMATION

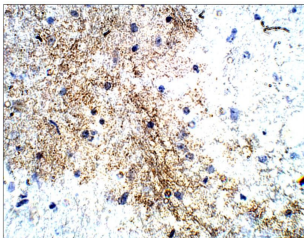
<b>Product Type</b>	Primary antibodies
<b>Short Description</b>	Rabbit polyclonal antibody anti-P2Y12 (300-342) is suitable for use in Flow Cytometry, ELISA, Immunocytochemistry, Immunofluorescence, Immunohistochemistry, Immunoprecipitation and Western Blot research applications.
<b>Applications</b>	FC, ELISA, ICC, IF, IHC, IP, WB
<b>Host/Source</b>	Rabbit
<b>Reactivity</b>	Chimpanzee, Human, Monkey, Pig, Rat

### PRODUCT PROPERTIES

<b>Clonality</b>	Polyclonal
<b>Clone ID</b>	
<b>Concentration</b>	0.57-0.68 µg/µl
<b>Conjugation</b>	Unconjugated
<b>Purification</b>	Affinity Purified
<b>Dilution Range</b>	WB: 1:500 DB: 1:10, 000 ELISA: 1:10, 000 IP: 1:200 IHC: 1:100 ICC: 1:100 IF: 1:100 CFM: 1:100
<b>Formulation</b>	
<b>Isotype</b>	IgG
<b>Storage</b>	Store at -20°C for long term storage. Avoid freeze-thaw cycles.
<b>Instruction</b>	

### TARGET INFORMATION

<b>Gene ID</b>	
<b>Gene Symbol</b>	
<b>Uniprot ID</b>	
<b>Immunogen</b>	Synthetic peptide taken within amino acid region 300-342 on human P2Y12 protein.
<b>Immunogen Region</b>	300-342
<b>Specificity</b>	
<b>Immunogen Sequence</b>	



Immunohistochemistry with Anti-P2Y12 Antibody (STJ502041) at 1:50 dilution in Buffer. DAB (brown) staining and Haematoxylin QS (blue) counterstain. 40X magnification. FFPE section.