

Anti-OSR2 antibody (90-250) (STJ502014)

STJ502014

GENERAL INFORMATION

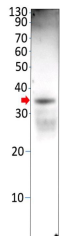
Product Type	Primary antibodies
Short Description	Rabbit polyclonal antibody anti-OSR2 (90-250) is suitable for use in ELISA, Immunohistochemistry, Immunoprecipitation and Western Blot research applications.
Applications	ELISA, IHC, IP, WB
Host/Source	Rabbit
Reactivity	Human, Mouse, Rat

PRODUCT PROPERTIES

Clonality	Polyclonal
Clone ID	
Concentration	0.51-0.63 µg/µl
Conjugation	Unconjugated
Purification	Affinity Purified
Dilution Range	WB: 1:500-1:750 DB: 1:20, 000-1:50, 000 ELISA: 1:20, 000-1:50, 000 IP: 1:200 IHC: 1:50-1:150
Formulation	
Isotype	IgG
Storage	Store at -20°C for long term storage. Avoid freeze-thaw cycles.
Instruction	

TARGET INFORMATION

Gene ID	107587
Gene Symbol	Osr2
Uniprot ID	OSR2_MOUSE
Immunogen	Synthetic peptide taken within amino acid region 90-250 on mouse Osr2 protein.
Immunogen Region	90-250
Specificity	
Immunogen Sequence	



Western blot with Anti-OSR2 Antibody (STJ502014) of rat colon at 1:500 dilution in buffer.