

Anti-OLIG2 antibody (1-50) (STJ502002)

STJ502002

GENERAL INFORMATION

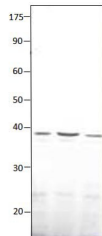
Product Type	Primary antibodies
Short Description	Rabbit polyclonal antibody anti-OLIG2 (1-50) is suitable for use in ELISA, Immunohistochemistry, Immunoprecipitation and Western Blot research applications.
Applications	ELISA, IHC, IP, WB
Host/Source	Rabbit
Reactivity	Human, Mouse, Rat

PRODUCT PROPERTIES

Clonality	Polyclonal
Clone ID	
Concentration	0.65µg/µl
Conjugation	Unconjugated
Purification	Affinity Purified
Dilution Range	WB: 1:500 DB: 1:10, 000 ELISA: 1:10, 000 IP: 1:200 IHC: 1:100
Formulation	
Isotype	IgG
Storage	Store at -20°C for long term storage. Avoid freeze-thaw cycles.
Instruction	

TARGET INFORMATION

Gene ID	10215
Gene Symbol	OLIG2
Uniprot ID	OLIG2_HUMAN
Immunogen	Synthetic peptide taken within amino acid region 1-50 on human Olig2 protein.
Immunogen Region	1-50
Specificity	
Immunogen Sequence	



Western blot with Anti-OLIG2 Antibody (STJ502002) on
A) MCF7 cells, B) OIG2 peptide. Antibody at 1:500
dilution in buffer.