

Anti-NPY5R antibody (STJ501966)

STJ501966

GENERAL INFORMATION

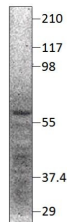
Product Type	Primary antibodies
Short Description	Rabbit polyclonal antibody anti-NPY5R is suitable for use in ELISA and Western Blot research applications.
Applications	ELISA, WB
Host/Source	Rabbit
Reactivity	Human

PRODUCT PROPERTIES

Clonality	Polyclonal
Clone ID	
Concentration	0.64-0.72 µg/µl
Conjugation	Unconjugated
Purification	Affinity Purified
Dilution Range	WB: 1:500 DB: 1:10, 000 ELISA: 1:10, 000
Formulation	
Isotype	IgG
Storage Instruction	Store at -20°C for long term storage. Avoid freeze-thaw cycles.

TARGET INFORMATION

Gene ID	4889
Gene Symbol	NPY5R
Uniprot ID	NPY5R_HUMAN
Immunogen	Synthetic peptide corresponding to unique amino acid sequence on NPY5R protein.
Immunogen Region	
Specificity	
Immunogen Sequence	



Western blot with Anti-NPY5R Antibody (STJ501966) with peptide on at 1:500 dilution in buffer.