

Anti-SLC9A1 antibody (700-750) (STJ501918)

STJ501918

GENERAL INFORMATION

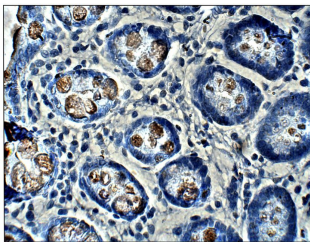
Product Type	Primary antibodies
Short Description	Rabbit polyclonal antibody anti-SLC9A1 (700-750) is suitable for use in ELISA, Immunoprecipitation and Western Blot research applications.
Applications	ELISA, IP, WB
Host/Source	Rabbit
Reactivity	Human, Monkey, Mouse, Rat

PRODUCT PROPERTIES

Clonality	Polyclonal
Clone ID	
Concentration	0.5-1.5 µg/µl
Conjugation	Unconjugated
Purification	Affinity Purified
Dilution Range	WB: 1:500 ELISA: 1:10, 000 IP: 1:200 IHC: 1:50-1:150 ICC: 1:50-1:150
Formulation	
Isotype	IgG
Storage Instruction	Store at -20°C for long term storage. Avoid freeze-thaw cycles.

TARGET INFORMATION

Gene ID	6548
Gene Symbol	SLC9A1
Uniprot ID	SL9A1_HUMAN
Immunogen	Synthetic peptide taken within amino acid region 700-750 on human Sodium/hydrogen exchanger 1/SLC9A1 protein.
Immunogen Region	700-750
Specificity	
Immunogen Sequence	



Immunohistochemistry of baboon Large Intestine with Anti-SLC9A1 primary antibody (STJ501918) at 1:50 dilution in Buffer. Section was treated with DAB and Haematoxylin stain. Magnification is at 40X.