

Anti-SLC6A2 antibody (N-Term) (STJ501915)

STJ501915

GENERAL INFORMATION

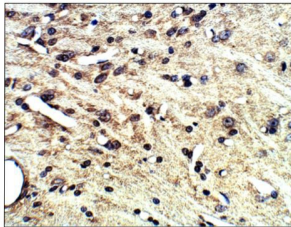
Product Type	Primary antibodies
Short Description	Rabbit polyclonal antibody anti-SLC6A2 (N-Term) is suitable for use in Confocal Microscopy, ELISA, Immunocytochemistry, Immunofluorescence, Immunohistochemistry, Immunoprecipitation and Western Blot research applications.
Applications	CM, ELISA, ICC, IF, IHC, IP, WB
Host/Source	Rabbit
Reactivity	Human, Mouse, Rat

PRODUCT PROPERTIES

Clonality	Polyclonal
Clone ID	
Concentration	0.61 µg/µl
Conjugation	Unconjugated
Purification	Affinity Purified
Dilution	DB-1:4, 000
Range	ELISA-1:4, 000 IP-1:200 WB-1:250 ICC-1:100 CM-1:100 IF-1:100
Formulation	
Isotype	IgG
Storage Instruction	Store at -20°C for long term storage. Avoid freeze-thaw cycles.

TARGET INFORMATION

Gene ID	6530
Gene Symbol	SLC6A2
Uniprot ID	SC6A2_HUMAN
Immunogen	Synthetic peptide corresponding to N-terminal amino acids that are unique to noradrenaline transporter protein. The antibodies are raised utilizing linear, multiple antigenic peptides or cyclic peptide methodology.
Immunogen Region	N-Term
Specificity	Does not cross react with dopamine and serotonin transporters.
Immunogen Sequence	



Immunohistochemistry of rat brain with Anti-SLC6A2 primary antibody (STJ501915) at 1:100 dilution in Buffer. Section was treated with DAB and Haematoxylin stain. Magnification is at 40X.

This product is suitable for in-vitro studies under the RESEARCH USE ONLY [RUO] licence. This product must not be used as for diagnostic or other medical purposes.
St John's Laboratory Ltd, Knowledge Dock Business Centre, University Way, London, E16 2RD | Tel: 0208 223 3081