

Anti-MME antibody (100-150) (STJ501899)

STJ501899

GENERAL INFORMATION

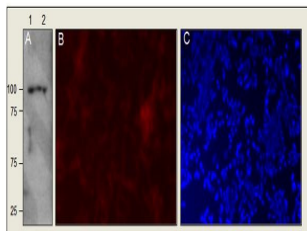
Product Type	Primary antibodies
Short Description	Rabbit polyclonal antibody anti-MME (100-150) is suitable for use in Confocal Microscopy, ELISA, Immunocytochemistry, Immunofluorescence, Immunohistochemistry, Immunoprecipitation and Western Blot research applications.
Applications	CM, ELISA, ICC, IF, IHC, IP, WB
Host/Source	Rabbit
Reactivity	Human, Mouse, Rat

PRODUCT PROPERTIES

Clonality	Polyclonal
Clone ID	
Concentration	0.72-0.78 µg/µl
Conjugation	Unconjugated
Purification	Affinity Purified
Dilution	WB: 1:500
Range	ELISA: 1:10, 000 IP: 1:250 IHC: 1:250 ICC: 1:250 IF: 1:250
Formulation	
Isotype	IgG
Storage	Store at -20°C for long term storage. Avoid freeze-thaw cycles.
Instruction	

TARGET INFORMATION

Gene ID	4311
Gene Symbol	MME
Uniprot ID	NEP_HUMAN
Immunogen	Multi-epitope synthetic peptides were used. A mixture of synthetic peptide taken within amino acid regions: 100-150, 200-250, 360-410, 450-500 and 700-750 on human Nephrylsin protein.
Immunogen Region	100-150
Specificity	
Immunogen Sequence	



A) WB of STJ501899 with SKnSH cells. 1:500 antibody dilution in buffer. B) IHC with STJ501894 with SKnSH cells. C) IHC of STJ501894 Hoechst staining. 1:200 antibody dilution in buffer.

This product is suitable for in-vitro studies under the RESEARCH USE ONLY [RUO] licence. This product must not be used as for diagnostic or other medical purposes.
St John's Laboratory Ltd, Knowledge Dock Business Centre, University Way, London, E16 2RD | Tel: 0208 223 3081