

Anti-MME antibody (450-500) (STJ501897)

STJ501897

GENERAL INFORMATION

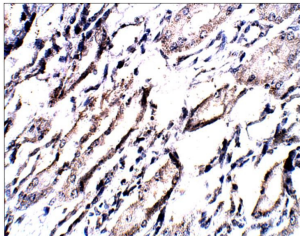
| | |
|--------------------------|---|
| Product Type | Primary antibodies |
| Short Description | Rabbit polyclonal antibody anti-MME (450-500) is suitable for use in Confocal Microscopy, ELISA, Immunocytochemistry, Immunofluorescence, Immunohistochemistry, Immunoprecipitation and Western Blot research applications. |
| Applications | CM, ELISA, ICC, IF, IHC, IP, WB |
| Host/Source | Rabbit |
| Reactivity | Human, Mouse, Rat |

PRODUCT PROPERTIES

| | |
|----------------------|--|
| Clonality | Polyclonal |
| Clone ID | |
| Concentration | 0.72-0.78 µg/µl |
| Conjugation | Unconjugated |
| Purification | Affinity Purified |
| Dilution | WB: 1:500 |
| Range | ELISA: 1:10, 000 IP: 1:250 IHC: 1:250 ICC: 1:250 IF: 1:250 |
| Formulation | |
| Isotype | IgG |
| Storage | Store at -20°C for long term storage. Avoid freeze-thaw cycles. |
| Instruction | |

TARGET INFORMATION

| | |
|---------------------------|---|
| Gene ID | 4311 |
| Gene Symbol | MME |
| Uniprot ID | NEP_HUMAN |
| Immunogen | Synthetic peptide taken within amino acid region 450-500 on human Nephilysin protein. |
| Immunogen Region | 450-500 |
| Specificity | |
| Immunogen Sequence | |



Immunohistochemistry of baboon kidney with Anti-MME primary antibody (STJ501897) at 1:100 dilution in Buffer. Section was treated with DAB and Haematoxylin stain. Magnification is at 40X.