

Anti-KIRREL antibody (200-250) (STJ501885)

STJ501885

GENERAL INFORMATION

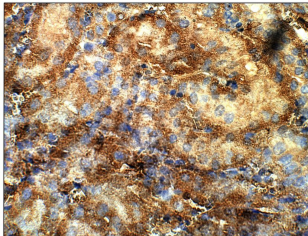
| | |
|--------------------------|---|
| Product Type | Primary antibodies |
| Short Description | Rabbit polyclonal antibody anti-KIRREL (200-250) is suitable for use in Confocal Microscopy, ELISA, Immunofluorescence, Immunohistochemistry, Immunoprecipitation and Western Blot research applications. |
| Applications | CM, ELISA, IF, IHC, IP, WB |
| Host/Source | Rabbit |
| Reactivity | Mouse, Rat |

PRODUCT PROPERTIES

| | |
|-----------------------|--|
| Clonality | Polyclonal |
| Clone ID | |
| Concentration | 0.45-0.65 µg/µl |
| Conjugation | Unconjugated |
| Purification | Affinity Purified |
| Dilution Range | WB: 1:250 DB: 1:10, 000 ELISA: 1:10, 000 IP: 1:250 IHC: 1:250 ICC: 1:250 IF: 1:250 CFM: 1:250 |
| Formulation | |
| Isotype | IgG |
| Storage | Store at -20°C for long term storage. Avoid freeze-thaw cycles. |
| Instruction | |

TARGET INFORMATION

| | |
|---------------------------|--|
| Gene ID | 170643 |
| Gene Symbol | Kirrel1 |
| Uniprot ID | KIRRL1_MOUSE |
| Immunogen | Synthetic peptide taken within amino acid region 200-250 on mouse Neph1 protein. |
| Immunogen Region | 200-250 |
| Specificity | Extracellular domain. |
| Immunogen Sequence | |



Immunohistochemistry of mouse kidney with Anti-KIRREL primary antibody (STJ501885) at 1:100 dilution in Buffer. Section was treated with DAB and Haematoxylin stain. Magnification is at 40X.

This product is suitable for in-vitro studies under the RESEARCH USE ONLY [RUO] licence. This product must not be used as for diagnostic or other medical purposes.
St John's Laboratory Ltd, Knowledge Dock Business Centre, University Way, London, E16 2RD | Tel: 0208 223 3081