

Anti-NAPSA antibody (250-300) (STJ501868)

STJ501868

GENERAL INFORMATION

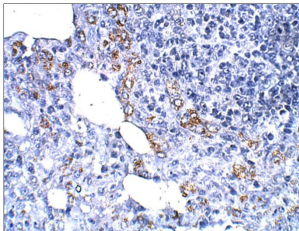
Product Type	Primary antibodies
Short Description	Rabbit polyclonal antibody anti-NAPSA (250-300) is suitable for use in ELISA, Immunohistochemistry, Immunoprecipitation and Western Blot research applications.
Applications	ELISA, IHC, IP, WB
Host/Source	Rabbit
Reactivity	Human, Mouse, Rat

PRODUCT PROPERTIES

Clonality	Polyclonal
Clone ID	
Concentration	0.85-1.25 µg/µl
Conjugation	Unconjugated
Purification	Affinity Purified
Dilution Range	WB: 1:500 DB: 1:10, 000 ELISA: 1:10, 000 IP: 1:200 IHC: 1:100
Formulation	
Isotype	IgG
Storage	Store at -20°C for long term storage. Avoid freeze-thaw cycles.
Instruction	

TARGET INFORMATION

Gene ID	9476
Gene Symbol	NAPSA
Uniprot ID	NAPSA_HUMAN
Immunogen	Synthetic peptide taken within amino acid region 250-300 on human Napsin A protein.
Immunogen Region	250-300
Specificity	
Immunogen Sequence	



Immunohistochemistry of baboon lung with Anti-NAPSA primary antibody (STJ501868) at 1:100 dilution in buffer. Section was treated with DAB and Haematoxylin stain. Magnification is at 10X.