

Anti-SNCA antibody (62-112) (STJ501861)

STJ501861

GENERAL INFORMATION

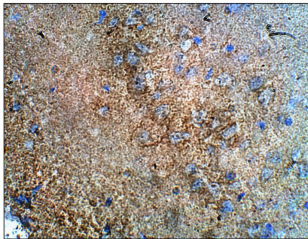
Product Type	Primary antibodies
Short Description	Rabbit polyclonal antibody anti-SNCA (62-112) is suitable for use in ELISA, Immunohistochemistry, Immunoprecipitation and Western Blot research applications.
Applications	ELISA, IHC, IP, WB
Host/Source	Rabbit
Reactivity	Human, Monkey, Mouse, Rat

PRODUCT PROPERTIES

Clonality	Polyclonal
Clone ID	
Concentration	0.50 µg/µl
Conjugation	Unconjugated
Purification	Affinity Purified
Dilution Range	WB: 1:500 DB: 1:20, 000 ELISA: 1:20, 000 IP: 1:200 IHC: 1:100
Formulation	
Isotype	IgG
Storage	Store at -20°C for long term storage. Avoid freeze-thaw cycles.
Instruction	

TARGET INFORMATION

Gene ID	6622
Gene Symbol	SNCA
Uniprot ID	SYUA_HUMAN
Immunogen	Synthetic peptide taken within amino acid region 62-112 unique sequence on alpha-synuclein isoform NACP 112 protein.
Immunogen Region	62-112
Specificity	This antibody will not detect NACP140.
Immunogen Sequence	



Immunohistochemistry with Anti-SNCA Antibody (STJ501861) at 1:100 dilution in Buffer. DAB (brown) staining and Haematoxylin QS (blue) counterstain. 40X magnification. FFPE section.