

Anti-MYLK3 antibody (10-60) (STJ501840)

STJ501840

GENERAL INFORMATION

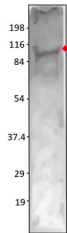
Product Type	Primary antibodies
Short Description	Rabbit polyclonal antibody anti-MYLK3 (10-60) is suitable for use in ELISA, Immunoprecipitation and Western Blot research applications.
Applications	ELISA, IP, WB
Host/Source	Rabbit
Reactivity	Human, Mouse, Rat

PRODUCT PROPERTIES

Clonality	Polyclonal
Clone ID	
Concentration	0.5-1.5 µg/µl
Conjugation	Unconjugated
Purification	Affinity Purified
Dilution Range	WB: 1:2, 500-1:5, 000 ELISA: 1:50, 000 IP: 1:200
Formulation	
Isotype	IgG
Storage Instruction	Store at -20°C for long term storage. Avoid freeze-thaw cycles.

TARGET INFORMATION

Gene ID	91807
Gene Symbol	MYLK3
Uniprot ID	MYLK3_HUMAN
Immunogen	Synthetic peptide taken within amino acid region 10-60 on human Myosin light chain kinase 3 protein.
Immunogen Region	10-60
Specificity	
Immunogen Sequence	



Western blot with Anti-MYLK3 Antibody (STJ501840) of mouse heart. Antibody at 1:500 dilution in buffer.