

Anti-MYD88 antibody (140-190) (STJ501828)

STJ501828

GENERAL INFORMATION

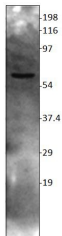
Product Type	Primary antibodies
Short Description	Rabbit polyclonal antibody anti-MYD88 (140-190) is suitable for use in ELISA, Immunohistochemistry, Immunoprecipitation and Western Blot research applications.
Applications	ELISA, IHC, IP, WB
Host/Source	Rabbit
Reactivity	Human, Monkey, Mouse, Rat

PRODUCT PROPERTIES

Clonality	Polyclonal
Clone ID	
Concentration	0.8 µg/µl
Conjugation	Unconjugated
Purification	Affinity Purified
Dilution Range	WB: 1:500-1:750 DB: 1:20, 000 ELISA: 1:20, 000 IP: 1:200 IHC: 1:50-1:150
Formulation	
Isotype	IgG
Storage	Store at -20°C for long term storage. Avoid freeze-thaw cycles.
Instruction	

TARGET INFORMATION

Gene ID	4615
Gene Symbol	MYD88
Uniprot ID	MYD88_HUMAN
Immunogen	Synthetic peptide taken within amino acid region 140-190 on human MyD88 protein.
Immunogen Region	140-190
Specificity	
Immunogen Sequence	



Western blot with Anti-MYD88 Antibody (STJ501828) with MYD88 peptide, at 1:500 dilution in buffer.