

## Anti-MUC1 antibody (STJ501816)

STJ501816

### GENERAL INFORMATION

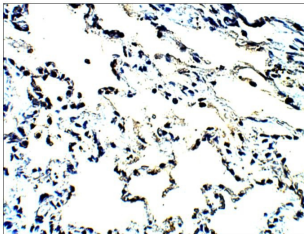
<b>Product Type</b>	Primary antibodies
<b>Short Description</b>	Rabbit polyclonal antibody anti-MUC1 is suitable for use in ELISA, Immunohistochemistry, Immunoprecipitation and Western Blot research applications.
<b>Applications</b>	ELISA, IHC, IP, WB
<b>Host/Source</b>	Rabbit
<b>Reactivity</b>	Human

### PRODUCT PROPERTIES

<b>Clonality</b>	Polyclonal
<b>Clone ID</b>	
<b>Concentration</b>	0.65 µg/µl
<b>Conjugation</b>	Unconjugated
<b>Purification</b>	Affinity Purified
<b>Dilution Range</b>	WB: 1:500 DB: 1:10, 000 ELISA: 1:10, 000 IP: 1:200 IHC: 1:200 ICC: 1:200 IF: 1:200 CFM: 1:200
<b>Formulation</b>	
<b>Isotype</b>	IgG
<b>Storage</b>	Store at -20°C for long term storage. Avoid freeze-thaw cycles.
<b>Instruction</b>	

### TARGET INFORMATION

<b>Gene ID</b>	4582
<b>Gene Symbol</b>	MUC1
<b>Uniprot ID</b>	MUC1_HUMAN
<b>Immunogen</b>	Synthetic peptide corresponding to unique amino acid sequence on MUCIN1 protein.
<b>Immunogen Region</b>	
<b>Specificity</b>	Will detect deglycosylated MUCIN1 protein.
<b>Immunogen Sequence</b>	



Immunohistochemistry of baboon lung with Anti-MUC1 primary antibody (STJ501816) at 1:100 dilution in Buffer. Section was treated with DAB and Haematoxylin stain. Magnification is at 40X.