

Anti-MSX1 antibody (46-64) {FITC} (STJ501812)

STJ501812

GENERAL INFORMATION

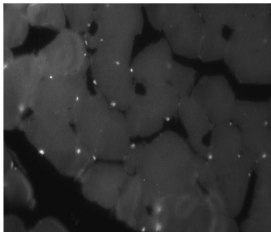
Product Type	Primary antibodies
Short Description	Rabbit polyclonal antibody anti-MSX1 (46-64) is suitable for use in ELISA, Immunohistochemistry, Immunoprecipitation and Western Blot research applications.
Applications	ELISA, IHC, IP, WB
Host/Source	Rabbit
Reactivity	Human, Mouse, Rat

PRODUCT PROPERTIES

Clonality	Polyclonal
Clone ID	
Concentration	0.50-0.65 µg/µl
Conjugation	FITC
Purification	Affinity Purified
Dilution Range	WB: 1:500-1:750 DB: 1:20, 000-1:50, 000 ELISA: 1:20, 000-1:50, 000 IP: 1:200 IHC: 1:50-1:150
Formulation	
Isotype	IgG
Storage	Store at -20°C for long term storage. Avoid freeze-thaw cycles.
Instruction	

TARGET INFORMATION

Gene ID	4487
Gene Symbol	MSX1
Uniprot ID	MSX1_HUMAN
Immunogen	Synthetic peptide: DEEGAKPKVSPSLLPFSVE corresponding to amino acids 46-64 of Mouse Msx1 protein. The peptide was post synthetically modified and conjugated to KLH using hetero bifunctional cross linker for immunization of rabbits.
Immunogen Region	46-64
Specificity	
Immunogen Sequence	



Immunohistochemistry of human muscle with Anti-MSX1 primary antibody (FITC) (STJ501812).

This product is suitable for in-vitro studies under the RESEARCH USE ONLY [RUO] licence. This product must not be used as for diagnostic or other medical purposes.
St John's Laboratory Ltd, Knowledge Dock Business Centre, University Way, London, E16 2RD | Tel: 0208 223 3081