

Anti-MRP1 antibody (STJ501801)

STJ501801

GENERAL INFORMATION

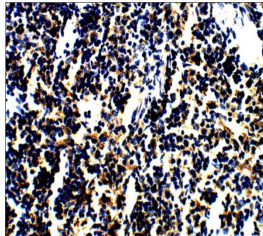
Product Type	Primary antibodies
Short Description	Rabbit polyclonal antibody anti-MRP1 is suitable for use in ELISA, Immunohistochemistry, Immunoprecipitation and Western Blot research applications.
Applications	ELISA, IHC, IP, WB
Host/Source	Rabbit
Reactivity	Mouse, Rat

PRODUCT PROPERTIES

Clonality	Polyclonal
Clone ID	
Concentration	0.5 µg/µl
Conjugation	Unconjugated
Purification	Affinity Purified
Dilution Range	WB: 1:500 ELISA: 1:20, 000 IP: 1:200 IHC: 1:100 ICC: 1:100 IF: 1:100
Formulation	
Isotype	IgG
Storage	Store at -20°C for long term storage. Avoid freeze-thaw cycles.
Instruction	

TARGET INFORMATION

Gene ID	24565
Gene Symbol	Abcc1
Uniprot ID	MRP1_RAT
Immunogen	Synthetic peptide corresponding to unique amino acid sequences on rat multidrug resistance-associated protein 1.
Immunogen	
Region	
Specificity	
Immunogen	
Sequence	



Immunohistochemistry of rat spleen with Anti-MRP1 primary antibody (STJ501801) at 1:100 dilution in Buffer. Section was treated with DAB and Haematoxylin stain. Magnification is at 40X.