

Anti-MPO antibody (290-340) (STJ501781)

STJ501781

GENERAL INFORMATION

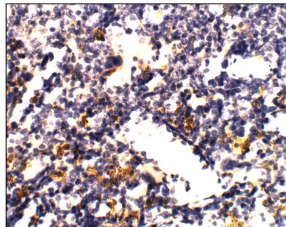
| | |
|--------------------------|---|
| Product Type | Primary antibodies |
| Short Description | Rabbit polyclonal antibody anti-MPO (290-340) is suitable for use in Confocal Microscopy, ELISA, Immunocytochemistry, Immunofluorescence, Immunohistochemistry, Immunoprecipitation and Western Blot research applications. |
| Applications | CM, ELISA, ICC, IF, IHC, IP, WB |
| Host/Source | Rabbit |
| Reactivity | Human, Mouse, Rat |

PRODUCT PROPERTIES

| | |
|-----------------------|--|
| Clonality | Polyclonal |
| Clone ID | |
| Concentration | 0.88-1.03 µg/µl |
| Conjugation | Unconjugated |
| Purification | Affinity Purified |
| Dilution Range | WB: 1:500 DB: 1:10, 000 ELISA: 1:10, 000 IP: 1:200 IHC: 1:200 ICC: 1:200 IF: 1:200 CFM: 1:200 |
| Formulation | |
| Isotype | IgG |
| Storage | Store at -20°C for long term storage. Avoid freeze-thaw cycles. |
| Instruction | |

TARGET INFORMATION

| | |
|---------------------------|--|
| Gene ID | 4353 |
| Gene Symbol | MPO |
| Uniprot ID | PERM_HUMAN |
| Immunogen | Multi-epitope antibody containing a mixture of synthetic peptides taken within amino acid region 290-340 and 600-650 of human Myeloperoxidase protein. |
| Immunogen Region | 290-340 |
| Specificity | |
| Immunogen Sequence | |



Immunohistochemistry of mouse spleen with Anti-MPO primary antibody (STJ501781) at 1:50 dilution in Buffer. Section was treated with DAB and Haematoxylin stain.