

Anti-OPRM1 antibody (405-455) (STJ501771)

STJ501771

GENERAL INFORMATION

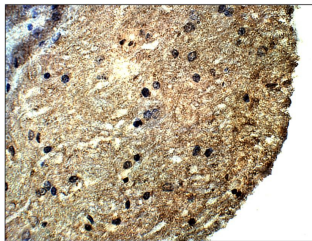
Product Type	Primary antibodies
Short Description	Rabbit polyclonal antibody anti-OPRM1 (405-455) is suitable for use in ELISA, Immunohistochemistry, Immunoprecipitation and Western Blot research applications.
Applications	ELISA, IHC, IP, WB
Host/Source	Rabbit
Reactivity	Human, Mouse, Rat

PRODUCT PROPERTIES

Clonality	Polyclonal
Clone ID	
Concentration	0.5 µg/µl
Conjugation	Unconjugated
Purification	Affinity Purified
Dilution Range	WB: 1:500 ELISA: 1:10, 000 IP: 1:200 IHC: 1:100
Formulation	
Isotype	IgG
Storage Instruction	Store at -20°C for long term storage. Avoid freeze-thaw cycles.

TARGET INFORMATION

Gene ID	4988
Gene Symbol	OPRM1
Uniprot ID	OPRM_HUMAN
Immunogen	Synthetic peptide taken within amino acid region 405-455 on human Mu-type opioid receptor isoform MOR-1i protein.
Immunogen Region	405-455
Specificity	
Immunogen Sequence	



Immunohistochemistry with Anti-OPRM1 Antibody (STJ501771) at 1:50 dilution in Buffer. DAB (brown) staining and Haematoxylin QS (blue) counterstain. 40X magnification on Leica DM4000B, FFPE section.