

Anti-MED23 antibody (650-700) (STJ501747)

STJ501747

GENERAL INFORMATION

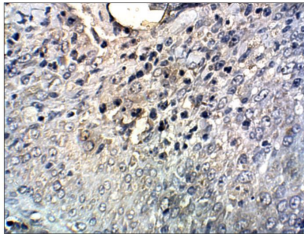
Product Type	Primary antibodies
Short Description	Rabbit polyclonal antibody anti-MED23 (650-700) is suitable for use in ELISA, Immunohistochemistry, Immunoprecipitation and Western Blot research applications.
Applications	ELISA, IHC, IP, WB
Host/Source	Rabbit
Reactivity	Human, Monkey, Mouse, Rat

PRODUCT PROPERTIES

Clonality	Polyclonal
Clone ID	
Concentration	0.64-0.72 µg/µl
Conjugation	Unconjugated
Purification	Affinity Purified
Dilution Range	WB: 1:500 DB: 1:10, 000 ELISA: 1:10, 000 IP: 1:200 IHC: 1:100
Formulation	
Isotype	IgG
Storage	Store at -20°C for long term storage. Avoid freeze-thaw cycles.
Instruction	

TARGET INFORMATION

Gene ID	9439
Gene Symbol	MED23
Uniprot ID	MED23_HUMAN
Immunogen	Synthetic pepetide taken within amino acid region 650-700 on MED23 protein.
Immunogen Region	650-700
Specificity	
Immunogen Sequence	



Immunohistochemistry of baboon Colon with Anti-MED23 primary antibody (STJ501747) at 1:100 dilution in buffer. Section was treated with DAB and Haematoxylin stain. Magnification is at 40X.