

## Anti-MeCP2 isoform 1 antibody (1-50) (STJ501741)

STJ501741

### GENERAL INFORMATION

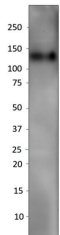
|                          |  |
|--------------------------|--|
| <b>Product Type</b>      | Primary antibodies   |
| <b>Short Description</b> | Rabbit polyclonal antibody anti-MeCP2 isoform 1 (1-50) is suitable for use in ELISA, Immunoprecipitation and Western Blot research applications. |
| <b>Applications</b>      | ELISA, IP, WB  |
| <b>Host/Source</b>       | Rabbit   |
| <b>Reactivity</b>        | Human, Mouse   |

### PRODUCT PROPERTIES

|                            |   |
|----------------------------|---|
| <b>Clonality</b>           | Polyclonal  |
| <b>Clone ID</b>            |   |
| <b>Concentration</b>       | 0.5-1.5 µg/µl   |
| <b>Conjugation</b>         | Unconjugated  |
| <b>Purification</b>        | Affinity Purified   |
| <b>Dilution Range</b>      | WB: 1:2, 500-1:5, 000<br>ELISA: 1:50, 000<br>IP: 1:200          |
| <b>Formulation</b>         |   |
| <b>Isotype</b>             | IgG   |
| <b>Storage Instruction</b> | Store at -20°C for long term storage. Avoid freeze-thaw cycles. |

### TARGET INFORMATION

|                           |  |
|---------------------------|--|
| <b>Gene ID</b>            | 17257  |
| <b>Gene Symbol</b>        | Mecp2  |
| <b>Uniprot ID</b>         | MECP2_MOUSE  |
| <b>Immunogen</b>          | Synthetic peptide taken within amino acid region 1-50 on mouse Methyl-CpG-binding Protein 2 isoform 1 protein. |
| <b>Immunogen Region</b>   | 1-50   |
| <b>Specificity</b>        |  |
| <b>Immunogen Sequence</b> |  |



Western blot with Anti-MeCP2 isoform 1 Antibody (STJ501741) of whole mouse brain at 1:500 dilution in buffer.