

Anti-MeCP2 isoform 2 antibody (436-486) (STJ501735)

STJ501735

GENERAL INFORMATION

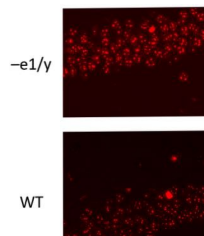
Product Type	Primary antibodies
Short Description	Rabbit polyclonal antibody anti-MeCP2 isoform 2 (436-486) is suitable for use in ELISA, Immunohistochemistry, Immunoprecipitation and Western Blot research applications.
Applications	ELISA, IHC, IP, WB
Host/Source	Rabbit
Reactivity	Human, Mouse, Rat

PRODUCT PROPERTIES

Clonality	Polyclonal
Clone ID	
Concentration	0.50 µg/µl
Conjugation	Unconjugated
Purification	Affinity Purified
Dilution Range	WB: 1:500 ELISA: 1:10, 000 IP: 1:200 IHC: 1:50-1:100 IF: 1:100
Formulation	
Isotype	IgG
Storage	Store at -20°C for long term storage. Avoid freeze-thaw cycles.
Instruction	

TARGET INFORMATION

Gene ID	4204
Gene Symbol	MECP2
Uniprot ID	MECP2_HUMAN
Immunogen	Synthetic peptide taken within amino acid region 436-486 on Methyl-CpG-binding protein 2 isoform 2 protein.
Immunogen Region	436-486
Specificity	Antibody is specific to MeCP2 e2 and has no cross reactivity with MeCP2 e1.
Immunogen Sequence	



Immunofluorescence with Anti-MeCP2 isoform 2 Antibody (STJ501735) on wild type and -e1/y male brains. Primary antibody is at 1:100 dilution in buffer, incubated overnight at RT. Secondary incubated for 2 hours at RT.