

Anti-MAPKAPK2 antibody (300-350) (STJ501699)

STJ501699

GENERAL INFORMATION

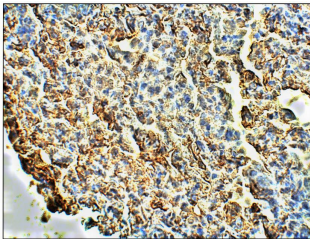
Product Type	Primary antibodies
Short Description	Chicken polyclonal antibody anti-MAPKAPK2 (300-350) is suitable for use in ELISA, Immunohistochemistry, Immunoprecipitation and Western Blot research applications.
Applications	ELISA, IHC, IP, WB
Host/Source	Chicken
Reactivity	Human, Mouse, Rat

PRODUCT PROPERTIES

Clonality	Polyclonal
Clone ID	
Concentration	0.5 µg/µl
Conjugation	Unconjugated
Purification	Affinity Purified
Dilution Range	WB: 1:500 ELISA: 1:10, 000 IP: 1:150 IHC: 1:50-1:150
Formulation	
Isotype	IgY
Storage Instruction	Store at -20°C for long term storage. Avoid freeze-thaw cycles.

TARGET INFORMATION

Gene ID	9261
Gene Symbol	MAPKAPK2
Uniprot ID	MAPK2_HUMAN
Immunogen	Synthetic peptide taken within amino acid region 300-350 on human Mitogen-activated protein kinase 2.
Immunogen Region	300-350
Specificity	
Immunogen Sequence	



Immunohistochemistry of mouse lung with Anti-MAPKAPK2 primary antibody (STJ501699) at 1:50 dilution in Buffer. Section was treated with DAB and Haematoxylin stain. Magnification is at 40X.