

Anti-MAPK15 antibody (500-544) (STJ501696)

STJ501696

GENERAL INFORMATION

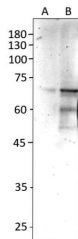
Product Type	Primary antibodies
Short Description	Rabbit polyclonal antibody anti-MAPK15 (500-544) is suitable for use in ELISA, Immunoprecipitation and Western Blot research applications.
Applications	ELISA, IP, WB
Host/Source	Rabbit
Reactivity	Human, Mouse, Rat

PRODUCT PROPERTIES

Clonality	Polyclonal
Clone ID	
Concentration	0.5 µg/µl
Conjugation	Unconjugated
Purification	Affinity Purified
Dilution Range	WB: 1:500 ELISA: 1:10, 000 IP: 1:150
Formulation	
Isotype	IgG
Storage Instruction	Store at -20°C for long term storage. Avoid freeze-thaw cycles.

TARGET INFORMATION

Gene ID	225689
Gene Symbol	MAPK15
Uniprot ID	MK15_HUMAN
Immunogen	Synthetic peptide taken within amino acid region 500-544 on human Mitogen-activated protein kinase 15.
Immunogen Region	500-544
Specificity	
Immunogen Sequence	



Western blot with Anti-MAPK15 Antibody (STJ501696) of A) HER2 cells, B) HEK293 cells. Antibody is at 1:500 dilution in buffer.