

Anti-MAPK11 antibody (300-350) (STJ501684)

STJ501684

GENERAL INFORMATION

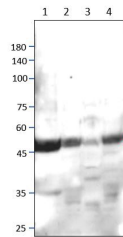
Product Type	Primary antibodies
Short Description	Chicken polyclonal antibody anti-MAPK11 (300-350) is suitable for use in ELISA, Immunohistochemistry, Immunoprecipitation and Western Blot research applications.
Applications	ELISA, IHC, IP, WB
Host/Source	Chicken
Reactivity	Human, Mouse, Rat

PRODUCT PROPERTIES

Clonality	Polyclonal
Clone ID	
Concentration	0.5 µg/µl
Conjugation	Unconjugated
Purification	Affinity Purified
Dilution Range	WB: 1:500 ELISA: 1:10, 000 IP: 1:150 IHC: 1:50-1:100
Formulation	
Isotype	IgY
Storage Instruction	Store at -20°C for long term storage. Avoid freeze-thaw cycles.

TARGET INFORMATION

Gene ID	5600
Gene Symbol	MAPK11
Uniprot ID	MK11_HUMAN
Immunogen	Synthetic peptide taken within amino acid region 300-350 on human Mitogen-activated protein kinase 11.
Immunogen Region	300-350
Specificity	
Immunogen Sequence	



Western blot with Anti-MAPK11 Antibody (STJ501684) of 1) Rat cortex, 2) Mouse cerebellum, 3) Mouse lung, 4) HEK cells. Antibody is at 1:500 dilution in buffer.

This product is suitable for in-vitro studies under the RESEARCH USE ONLY [RUO] licence. This product must not be used as for diagnostic or other medical purposes.
St John's Laboratory Ltd, Knowledge Dock Business Centre, University Way, London, E16 2RD | Tel: 0208 223 3081