

Anti-MAPK10 antibody (375-425) (STJ501681)

STJ501681

GENERAL INFORMATION

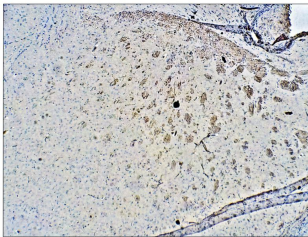
Product Type	Primary antibodies
Short Description	Chicken polyclonal antibody anti-MAPK10 (375-425) is suitable for use in ELISA, Immunohistochemistry, Immunoprecipitation and Western Blot research applications.
Applications	ELISA, IHC, IP, WB
Host/Source	Chicken
Reactivity	Human, Mouse, Rat

PRODUCT PROPERTIES

Clonality	Polyclonal
Clone ID	
Concentration	0.5 µg/µl
Conjugation	Unconjugated
Purification	Affinity Purified
Dilution Range	WB: 1:500 ELISA: 1:10, 000 IP: 1:150 IHC: 1:50-1:100
Formulation	
Isotype	IgY
Storage Instruction	Store at -20°C for long term storage. Avoid freeze-thaw cycles.

TARGET INFORMATION

Gene ID	5602
Gene Symbol	MAPK10
Uniprot ID	MK10_HUMAN
Immunogen	Synthetic peptide taken within amino acid region 375-425 on human Mitogen-activated protein kinase 10.
Immunogen Region	375-425
Specificity	
Immunogen Sequence	



Immunohistochemistry of mouse brain with Anti-MAPK10 primary antibody (STJ501681) at 1:50 dilution in Buffer. Section was treated with DAB and Haematoxylin stain. Magnification is at 5X.