

## Anti-MAPK1 antibody (300-350) (STJ501678)

STJ501678

### GENERAL INFORMATION

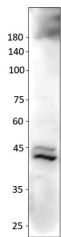
|                          |  |
|--------------------------|--|
| <b>Product Type</b>      | Primary antibodies   |
| <b>Short Description</b> | Chicken polyclonal antibody anti-MAPK1 (300-350) is suitable for use in ELISA, Immunohistochemistry, Immunoprecipitation and Western Blot research applications. |
| <b>Applications</b>      | ELISA, IHC, IP, WB   |
| <b>Host/Source</b>       | Chicken  |
| <b>Reactivity</b>        | Human, Mouse, Rat  |

### PRODUCT PROPERTIES

|                            |   |
|----------------------------|---|
| <b>Clonality</b>           | Polyclonal  |
| <b>Clone ID</b>            |   |
| <b>Concentration</b>       | 0.5 µg/µl   |
| <b>Conjugation</b>         | Unconjugated  |
| <b>Purification</b>        | Affinity Purified   |
| <b>Dilution Range</b>      | WB: 1:500<br>ELISA: 1:10, 000<br>IP: 1:150<br>IHC: 1:100        |
| <b>Formulation</b>         |   |
| <b>Isotype</b>             | IgY   |
| <b>Storage Instruction</b> | Store at -20°C for long term storage. Avoid freeze-thaw cycles. |

### TARGET INFORMATION

|                           |   |
|---------------------------|---|
| <b>Gene ID</b>            | 5594  |
| <b>Gene Symbol</b>        | MAPK1   |
| <b>Uniprot ID</b>         | MK01_HUMAN  |
| <b>Immunogen</b>          | Synthetic peptide taken within amino acid region 300-350 on human Mitogen-activated protein kinase 1. |
| <b>Immunogen Region</b>   | 300-350   |
| <b>Specificity</b>        |   |
| <b>Immunogen Sequence</b> |   |



Western blot with Anti-MAPK1 Antibody (STJ501678) of mouse brain at 1:500 dilution in buffer. Second band may represent phosphorylated MAPK1.