

Anti-MAP3K4 antibody (1558-1608) (STJ501672)

STJ501672

GENERAL INFORMATION

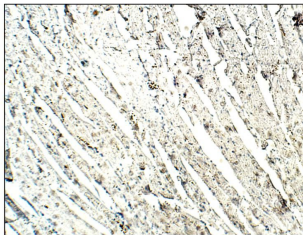
Product Type	Primary antibodies
Short Description	Rabbit polyclonal antibody anti-MAP3K4 (1558-1608) is suitable for use in ELISA, Immunohistochemistry, Immunoprecipitation and Western Blot research applications.
Applications	ELISA, IHC, IP, WB
Host/Source	Rabbit
Reactivity	Human, Mouse, Rat

PRODUCT PROPERTIES

Clonality	Polyclonal
Clone ID	
Concentration	0.50 µg/µl
Conjugation	Unconjugated
Purification	Affinity Purified
Dilution Range	WB: 1:500 ELISA: 1:10, 000 IP: 1:200 IHC: 1:50-1:100
Formulation	
Isotype	IgG
Storage Instruction	Store at -20°C for long term storage. Avoid freeze-thaw cycles.

TARGET INFORMATION

Gene ID	4216
Gene Symbol	MAP3K4
Uniprot ID	M3K4_HUMAN
Immunogen	Synthetic peptide taken within amino acid region 1558-1608 on human MAP3K4 protein.
Immunogen Region	1558-1608
Specificity	
Immunogen Sequence	



Immunohistochemistry of mouse tissue with Anti-MAP3K4 primary antibody (STJ501672) at 1:50 dilution in buffer. Section was treated with DAB and Haematoxylin stain. Magnification is at 10X.