

Anti-MAP3K14 antibody (250-350) (STJ501669)

STJ501669

GENERAL INFORMATION

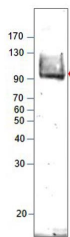
Product Type	Primary antibodies
Short Description	Rabbit polyclonal antibody anti-MAP3K14 (250-350) is suitable for use in ELISA and Western Blot research applications.
Applications	ELISA, WB
Host/Source	Rabbit
Reactivity	Human, Mouse, Rat

PRODUCT PROPERTIES

Clonality	Polyclonal
Clone ID	
Concentration	0.64-0.72 µg/µl
Conjugation	Unconjugated
Purification	Affinity Purified
Dilution Range	WB: 1:500 DB: 1:10, 000 ELISA: 1:10, 000
Formulation	
Isotype	IgG
Storage Instruction	Store at -20°C for long term storage. Avoid freeze-thaw cycles.

TARGET INFORMATION

Gene ID	9020
Gene Symbol	MAP3K14
Uniprot ID	M3K14_HUMAN
Immunogen	Synthetic peptide taken within amino acid region 250-350 on human MAP3K14 protein.
Immunogen Region	250-350
Specificity	
Immunogen Sequence	



Western blot with Anti-MAP3K14 Antibody (STJ501669) of rat testis at 1:500 dilution in buffer.