

Anti-MAP3K12 antibody (270-320) (STJ501666)

STJ501666

GENERAL INFORMATION

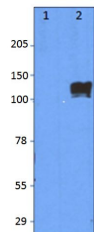
Product Type	Primary antibodies
Short Description	Rabbit polyclonal antibody anti-MAP3K12 (270-320) is suitable for use in ELISA, Immunoprecipitation and Western Blot research applications.
Applications	ELISA, IP, WB
Host/Source	Rabbit
Reactivity	Human, Mouse, Rat

PRODUCT PROPERTIES

Clonality	Polyclonal
Clone ID	
Concentration	0.68 µg/µl
Conjugation	Unconjugated
Purification	Affinity Purified
Dilution Range	WB: 1:500 DB: 1:10, 000 ELISA: 1:10, 000 IP: 1:200
Formulation	
Isotype	IgG
Storage Instruction	Store at -20°C for long term storage. Avoid freeze-thaw cycles.

TARGET INFORMATION

Gene ID	7786
Gene Symbol	MAP3K12
Uniprot ID	M3K12_HUMAN
Immunogen	Synthetic peptide taken within amino acid region 270-320 on MAP3K12 protein.
Immunogen Region	270-320
Specificity	
Immunogen Sequence	



Western blot with Anti-MAP3K12 Antibody (STJ501666) on 1) Mock transfected cells, 2) MAP3K12 transfected cells with peptide. Antibody is at 1:500 dilution in buffer.