

## Anti-MAP3K10 antibody (900-950) (STJ501660)

STJ501660

### GENERAL INFORMATION

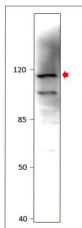
|                          |   |
|--------------------------|---|
| <b>Product Type</b>      | Primary antibodies  |
| <b>Short Description</b> | Rabbit polyclonal antibody anti-MAP3K10 (900-950) is suitable for use in Dot Blot, ELISA, Immunoprecipitation and Western Blot research applications. |
| <b>Applications</b>      | DB, ELISA, IP, WB   |
| <b>Host/Source</b>       | Rabbit  |
| <b>Reactivity</b>        | Human, Mouse, Rat   |

### PRODUCT PROPERTIES

|                       |   |
|-----------------------|---|
| <b>Clonality</b>      | Polyclonal  |
| <b>Clone ID</b>       |   |
| <b>Concentration</b>  | 0.68-0.70 µg/µl   |
| <b>Conjugation</b>    | Unconjugated  |
| <b>Purification</b>   | Affinity Purified   |
| <b>Dilution Range</b> | WB: 1:500<br>DB: 1:4, 000<br>ELISA: 1:4, 000<br>IP: 1:150       |
| <b>Formulation</b>    |   |
| <b>Isotype</b>        | IgG   |
| <b>Storage</b>        | Store at -20°C for long term storage. Avoid freeze-thaw cycles. |
| <b>Instruction</b>    |   |

### TARGET INFORMATION

|                    |  |
|--------------------|--|
| <b>Gene ID</b>     | 4294   |
| <b>Gene Symbol</b> | MAP3K10  |
| <b>Uniprot ID</b>  | M3K10_HUMAN  |
| <b>Immunogen</b>   | Synthetic peptide corresponding to the C-terminal taken within amino acid region 900-950 on human MAP3K10 protein. |
| <b>Immunogen</b>   | 900-950  |
| <b>Region</b>      |  |
| <b>Specificity</b> |  |
| <b>Immunogen</b>   |  |
| <b>Sequence</b>    |  |



Western blot with Anti-MAP3K10 Antibody (STJ501660) of MDA cell at 1:500 dilution in buffer.