

## Anti-MAP2K1 antibody (300-350) (STJ501657)

STJ501657

### GENERAL INFORMATION

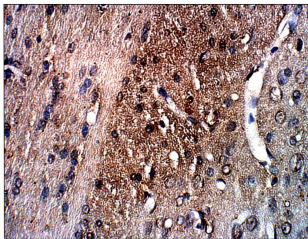
<b>Product Type</b>	Primary antibodies
<b>Short Description</b>	Chicken polyclonal antibody anti-MAP2K1 (300-350) is suitable for use in ELISA, Immunohistochemistry, Immunoprecipitation and Western Blot research applications.
<b>Applications</b>	ELISA, IHC, IP, WB
<b>Host/Source</b>	Chicken
<b>Reactivity</b>	Human, Mouse, Rat

### PRODUCT PROPERTIES

<b>Clonality</b>	Polyclonal
<b>Clone ID</b>	
<b>Concentration</b>	0.5 µg/µl
<b>Conjugation</b>	Unconjugated
<b>Purification</b>	Affinity Purified
<b>Dilution Range</b>	WB: 1:500 ELISA: 1:10, 000 IP: 1:150 IHC: 1:50-1:150
<b>Formulation</b>	
<b>Isotype</b>	IgY
<b>Storage Instruction</b>	Store at -20°C for long term storage. Avoid freeze-thaw cycles.

### TARGET INFORMATION

<b>Gene ID</b>	5604
<b>Gene Symbol</b>	MAP2K1
<b>Uniprot ID</b>	MP2K1_HUMAN
<b>Immunogen</b>	Synthetic peptide taken within amino acid region 300-350 on human Mitogen-activated protein kinase kinase 1.
<b>Immunogen Region</b>	300-350
<b>Specificity</b>	
<b>Immunogen Sequence</b>	



Immunohistochemistry of mouse brain with Anti-MAP2K1 primary antibody (STJ501657) at 1:50 dilution in Buffer. Section was treated with DAB and Haematoxylin stain. Magnification is at 40X.

This product is suitable for in-vitro studies under the RESEARCH USE ONLY [RUO] licence. This product must not be used as for diagnostic or other medical purposes.  
St John's Laboratory Ltd, Knowledge Dock Business Centre, University Way, London, E16 2RD | Tel: 0208 223 3081