

## Anti-MACF1 antibody (STJ501645)

STJ501645

### GENERAL INFORMATION

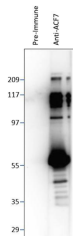
<b>Product Type</b>	Primary antibodies
<b>Short Description</b>	Rabbit polyclonal antibody anti-MACF1 is suitable for use in ELISA, Immunocytochemistry, Immunofluorescence and Western Blot research applications.
<b>Applications</b>	ELISA, ICC, IF, WB
<b>Host/Source</b>	Rabbit
<b>Reactivity</b>	Mouse, Rat

### PRODUCT PROPERTIES

<b>Clonality</b>	Polyclonal
<b>Clone ID</b>	
<b>Concentration</b>	0.7 µg/µl
<b>Conjugation</b>	Unconjugated
<b>Purification</b>	Affinity Purified
<b>Dilution Range</b>	WB: 1:500 ELISA: 1:10, 000 IP: 1:200 IHC: 1:250 ICC: 1:250 IF: 1:250
<b>Formulation</b>	
<b>Isotype</b>	IgG
<b>Storage</b>	Store at -20°C for long term storage. Avoid freeze-thaw cycles.
<b>Instruction</b>	

### TARGET INFORMATION

<b>Gene ID</b>	
<b>Gene Symbol</b>	
<b>Uniprot ID</b>	
<b>Immunogen</b>	Recombinant protein
<b>Immunogen</b>	
<b>Region</b>	
<b>Specificity</b>	
<b>Immunogen</b>	
<b>Sequence</b>	



Western blot with Anti-MACF1 Antibody (STJ501645) on recombinant ACF7 (1622-1817 of MACF1) at 1:1000 dilution in buffer.

This product is suitable for in-vitro studies under the RESEARCH USE ONLY [RUO] licence. This product must not be used as for diagnostic or other medical purposes.  
 St John's Laboratory Ltd, Knowledge Dock Business Centre, University Way, London, E16 2RD | Tel: 0208 223 3081