

## Anti-LOXL1 antibody (570-607) (STJ501633)

STJ501633

### GENERAL INFORMATION

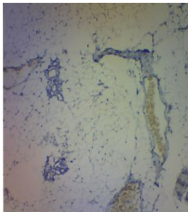
<b>Product Type</b>	Primary antibodies
<b>Short Description</b>	Rabbit polyclonal antibody anti-LOXL1 (570-607) is suitable for use in Confocal Microscopy, ELISA, Immunocytochemistry, Immunofluorescence, Immunohistochemistry, Immunoprecipitation and Western Blot research applications.
<b>Applications</b>	CM, ELISA, ICC, IF, IHC, IP, WB
<b>Host/Source</b>	Rabbit
<b>Reactivity</b>	Human, Mouse, Rat

### PRODUCT PROPERTIES

<b>Clonality</b>	Polyclonal
<b>Clone ID</b>	
<b>Concentration</b>	0.66 µg/µl
<b>Conjugation</b>	Unconjugated
<b>Purification</b>	Affinity Purified
<b>Dilution Range</b>	WB: 1:500-1:1,000 IP: 1:150 IHC: 1:50 IF: 1:50
<b>Formulation</b>	
<b>Isotype</b>	IgG
<b>Storage</b>	Store at -20°C for long term storage. Avoid freeze-thaw cycles.
<b>Instruction</b>	

### TARGET INFORMATION

<b>Gene ID</b>	<a href="#">16949</a>
<b>Gene Symbol</b>	<a href="#">Loxl1</a>
<b>Uniprot ID</b>	<a href="#">LOXL1_MOUSE</a>
<b>Immunogen</b>	Synthetic peptide taken within amino acid region 570-607 on rat LOXL1 protein.
<b>Immunogen Region</b>	570-607
<b>Specificity</b>	
<b>Immunogen Sequence</b>	



Immunohistochemistry of human lung with Anti-LOXL1 primary antibody (STJ501633) at 1:50 dilution in Buffer. Section was treated with Haematoxylin stain.