

Anti-LMNB1 antibody (450-500) (STJ501624)

STJ501624

GENERAL INFORMATION

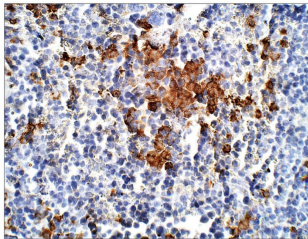
Product Type	Primary antibodies
Short Description	Rabbit polyclonal antibody anti-LMNB1 (450-500) is suitable for use in ELISA, Immunohistochemistry, Immunoprecipitation and Western Blot research applications.
Applications	ELISA, IHC, IP, WB
Host/Source	Rabbit
Reactivity	Human, Mouse, Rat

PRODUCT PROPERTIES

Clonality	Polyclonal
Clone ID	
Concentration	0.5-1.5 µg/µl
Conjugation	Unconjugated
Purification	Affinity Purified
Dilution Range	WB: 1:2, 500-1:5, 000 ELISA: 1:50, 000 IP: 1:200 IHC: 1:50-1:150
Formulation	
Isotype	IgG
Storage Instruction	Store at -20°C for long term storage. Avoid freeze-thaw cycles.

TARGET INFORMATION

Gene ID	4001
Gene Symbol	LMNB1
Uniprot ID	LMNB1_HUMAN
Immunogen	Synthetic peptide taken within amino acid region 450-500 on human Lamin-B1 protein.
Immunogen Region	450-500
Specificity	
Immunogen Sequence	



Immunohistochemistry of mouse spleen with Anti-LMNB1 primary antibody (STJ501624) at 1:100 dilution in Buffer. Section was treated with DAB and Haematoxylin stain. Magnification is at 40X.