

Anti-LIN28A antibody (1-60) (STJ501621)

STJ501621

GENERAL INFORMATION

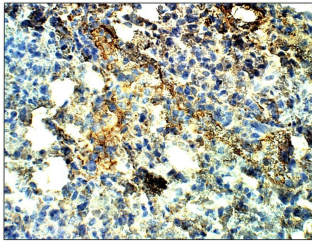
Product Type	Primary antibodies
Short Description	Rabbit polyclonal antibody anti-LIN28A (1-60) is suitable for use in ELISA, Immunohistochemistry, Immunoprecipitation and Western Blot research applications.
Applications	ELISA, IHC, IP, WB
Host/Source	Rabbit
Reactivity	Human, Mouse, Rat

PRODUCT PROPERTIES

Clonality	Polyclonal
Clone ID	
Concentration	0.88-0.95 µg/µl
Conjugation	Unconjugated
Purification	Affinity Purified
Dilution Range	WB: 1:500 ELISA: 1:10, 000 IP: 1:200 IHC: 1:50-1:150
Formulation	
Isotype	IgG
Storage Instruction	Store at -20°C for long term storage. Avoid freeze-thaw cycles.

TARGET INFORMATION

Gene ID	79727
Gene Symbol	LIN28A
Uniprot ID	LN28A_HUMAN
Immunogen	Synthetic peptide taken within amino acid sequence 1-60 on Lin28A sequence.
Immunogen Region	1-60
Specificity	
Immunogen Sequence	



Immunohistochemistry of mouse lung with Anti-LIN28A primary antibody (STJ501621) at 1:50 dilution in Buffer. Section was treated with DAB and Haematoxylin stain. Magnification is at 40X.