

Anti-LIMK2 antibody (570-638) (STJ501616)

STJ501616

GENERAL INFORMATION

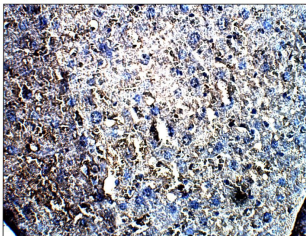
Product Type	Primary antibodies
Short Description	Chicken polyclonal antibody anti-LIMK2 (570-638) is suitable for use in ELISA, Immunohistochemistry, Immunoprecipitation and Western Blot research applications.
Applications	ELISA, IHC, IP, WB
Host/Source	Chicken
Reactivity	Human, Mouse, Rat

PRODUCT PROPERTIES

Clonality	Polyclonal
Clone ID	
Concentration	0.55-0.75 µg/µl
Conjugation	Unconjugated
Purification	Affinity Purified
Dilution Range	WB: 1:500 DB: 1:10, 000 ELISA: 1:10, 000 IP: 1:200 IHC: 1:50-1:150
Formulation	
Isotype	IgY
Storage	Store at -20°C for long term storage. Avoid freeze-thaw cycles.
Instruction	

TARGET INFORMATION

Gene ID	3985
Gene Symbol	LIMK2
Uniprot ID	LIMK2_HUMAN
Immunogen	Synthetic peptide taken within amino acid region 570-638 on human LIMK2 protein.
Immunogen Region	570-638
Specificity	
Immunogen Sequence	



Immunohistochemistry of mouse liver with Anti-LIMK2 primary antibody (STJ501616) at 1:50 dilution in Buffer. Section was treated with DAB and Haematoxylin stain. Magnification is at 40x.