

Anti-LILRB3 antibody (580-631) (STJ501604)

STJ501604

GENERAL INFORMATION

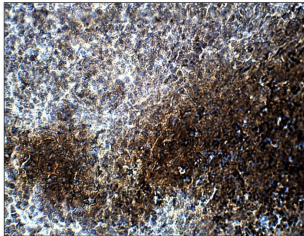
Product Type	Primary antibodies
Short Description	Rabbit polyclonal antibody anti-LILRB3 (580-631) is suitable for use in ELISA, Immunohistochemistry, Immunoprecipitation and Western Blot research applications.
Applications	ELISA, IHC, IP, WB
Host/Source	Rabbit
Reactivity	Human, Monkey

PRODUCT PROPERTIES

Clonality	Polyclonal
Clone ID	
Concentration	0.74 µg/µl
Conjugation	Unconjugated
Purification	Affinity Purified
Dilution Range	WB: 1:500 DB: 1:20, 000 ELISA: 1:20, 000 IP: 1:200 IHC: 1:50-1:150
Formulation	
Isotype	IgG
Storage	Store at -20°C for long term storage. Avoid freeze-thaw cycles.
Instruction	

TARGET INFORMATION

Gene ID	102725035/107987462/11025
Gene Symbol	LILRB3
Uniprot ID	LILRB3_HUMAN
Immunogen	Synthetic peptide taken within amino acid region 580-631 on human LILRB3 protein.
Immunogen Region	580-631
Specificity	This antibody will detect all three isoforms of human LILRB3 protein.
Immunogen Sequence	



Immunohistochemistry of baboon spleen with Anti-LILRB3 primary antibody (STJ501604) at 1:100 dilution in Buffer. Section was treated with DAB and Haematoxylin stain. Magnification is at 40X.

This product is suitable for in-vitro studies under the RESEARCH USE ONLY [RUO] licence. This product must not be used as for diagnostic or other medical purposes.
St John's Laboratory Ltd, Knowledge Dock Business Centre, University Way, London, E16 2RD | Tel: 0208 223 3081