

Anti-Luteinizing Hormone antibody (1-50) (STJ501597)

STJ501597

GENERAL INFORMATION

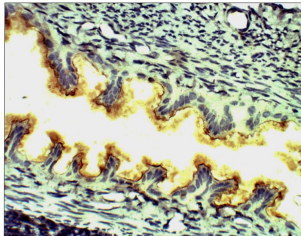
Product Type	Primary antibodies
Short Description	Rabbit polyclonal antibody anti-Luteinizing Hormone (1-50) is suitable for use in Confocal Microscopy, ELISA, Immunocytochemistry, Immunofluorescence, Immunohistochemistry, ip and Western Blot research applications.
Applications	CM, ELISA, ICC, IF, IHC, ip, WB
Host/Source	Rabbit
Reactivity	Human, Mouse, Rat

PRODUCT PROPERTIES

Clonality	Polyclonal
Clone ID	
Concentration	0.59-0.72 µg/µl
Conjugation	Unconjugated
Purification	Affinity Purified
Dilution Range	WB: 1:500 DB: 1:50, 000 ELISA: 1:50, 000 IP: 1:100 IHC: 1:250-1:2, 000 ICC: 1:250 IF: 1:250 CFM: 1:250
Formulation	
Isotype	IgG
Storage	Store at -20°C for long term storage. Avoid freeze-thaw cycles.
Instruction	

TARGET INFORMATION

Gene ID	
Gene Symbol	
Uniprot ID	
Immunogen	N-epitope synthetic peptide taken within amino acid region 1-50 on human LH protein.
Immunogen Region	1-50
Specificity	
Immunogen Sequence	



Immunohistochemistry of rat Ovary with Anti-Luteinizing Hormone primary antibody (STJ501597) at 1:100 dilution in buffer. Section was treated with DAB and Haematoxylin stain. Magnification is at 40X.