

## Anti-LCK antibody (500-539) (STJ501585)

STJ501585

### GENERAL INFORMATION

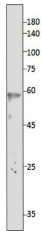
<b>Product Type</b>	Primary antibodies
<b>Short Description</b>	Rabbit polyclonal antibody anti-LCK (500-539) is suitable for use in ELISA, Immunoprecipitation and Western Blot research applications.
<b>Applications</b>	ELISA, IP, WB
<b>Host/Source</b>	Rabbit
<b>Reactivity</b>	Human, Mouse, Rat

### PRODUCT PROPERTIES

<b>Clonality</b>	Polyclonal
<b>Clone ID</b>	
<b>Concentration</b>	0.5 µg/µl
<b>Conjugation</b>	Unconjugated
<b>Purification</b>	Affinity Purified
<b>Dilution Range</b>	WB: 1:500 ELISA: 1:10, 000 IP: 1:150
<b>Formulation</b>	
<b>Isotype</b>	IgG
<b>Storage Instruction</b>	Store at -20°C for long term storage. Avoid freeze-thaw cycles.

### TARGET INFORMATION

<b>Gene ID</b>	<a href="#">3932</a>
<b>Gene Symbol</b>	<a href="#">LCK</a>
<b>Uniprot ID</b>	<a href="#">LCK_HUMAN</a>
<b>Immunogen</b>	Synthetic peptide taken within amino acid region 500-539 on human Lymphocyte cell-specific protein-tyrosine kinase.
<b>Immunogen Region</b>	500-539
<b>Specificity</b>	
<b>Immunogen Sequence</b>	



Western blot with Anti-LCK Antibody (STJ501585) of human acrosome membrane. Antibody at 1:500 dilution in 1% milk.