

Anti-LARP7 antibody (360-410) (STJ501573)

STJ501573

GENERAL INFORMATION

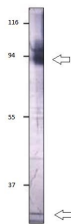
Product Type	Primary antibodies
Short Description	Rabbit polyclonal antibody anti-LARP7 (360-410) is suitable for use in ELISA, Immunoprecipitation and Western Blot research applications.
Applications	ELISA, IP, WB
Host/Source	Rabbit
Reactivity	Human

PRODUCT PROPERTIES

Clonality	Polyclonal
Clone ID	
Concentration	0.50-0.75 µg/µl
Conjugation	Unconjugated
Purification	Affinity Purified
Dilution Range	WB: 1:500 DB: 1:4, 000 ELISA: 1:4, 000 IP: 1:150
Formulation	
Isotype	IgG
Storage Instruction	Store at -20°C for long term storage. Avoid freeze-thaw cycles.

TARGET INFORMATION

Gene ID	51574
Gene Symbol	LARP7
Uniprot ID	LARP7_HUMAN
Immunogen	Synthetic peptide taken within amino acid region 360-410 on human LARP7 protein.
Immunogen Region	360-410
Specificity	
Immunogen Sequence	



Western blot with Anti-LARP7 Antibody (STJ501573) with peptide at 1:500 dilution in buffer.