

Anti-CT83 antibody (61-111) (STJ501547)

STJ501547

GENERAL INFORMATION

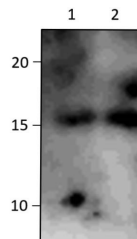
Product Type	Primary antibodies
Short Description	Rabbit polyclonal antibody anti-CT83 (61-111) is suitable for use in ELISA, Immunoprecipitation and Western Blot research applications.
Applications	ELISA, IP, WB
Host/Source	Rabbit
Reactivity	Human, Monkey

PRODUCT PROPERTIES

Clonality	Polyclonal
Clone ID	
Concentration	0.6 µg/µl
Conjugation	Unconjugated
Purification	Affinity Purified
Dilution Range	WB: 1:500 ELISA: 1:10, 000 IP: 1:200
Formulation	
Isotype	IgG
Storage Instruction	Store at -20°C for long term storage. Avoid freeze-thaw cycles.

TARGET INFORMATION

Gene ID	203413
Gene Symbol	CT83
Uniprot ID	KKLC1_HUMAN
Immunogen	Synthetic peptide taken within amino acid region 61-111 on human Kita-kyushu lung cancer antigen 1.
Immunogen Region	61-111
Specificity	
Immunogen Sequence	



Western blot with Anti-CT83 Antibody (STJ501547) on 1) THP1 cells, 2) THP1 cells treated with LPS. Antibody at 1:250 dilution in buffer.