

Anti-KIF14 antibody (850-960) (STJ501537)

STJ501537

GENERAL INFORMATION

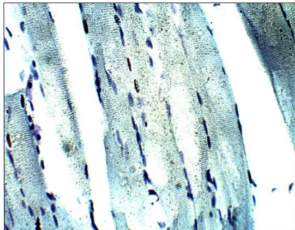
Product Type	Primary antibodies
Short Description	Rabbit polyclonal antibody anti-KIF14 (850-960) is suitable for use in ELISA, Immunohistochemistry, Immunoprecipitation and Western Blot research applications.
Applications	ELISA, IHC, IP, WB
Host/Source	Rabbit
Reactivity	Human, Mouse, Rat

PRODUCT PROPERTIES

Clonality	Polyclonal
Clone ID	
Concentration	0.56 µg/µl
Conjugation	Unconjugated
Purification	Affinity Purified
Dilution Range	WB: 1:500 ELISA: 1:10,000 IP: 1:200 IHC: 1:100 ICC: 1:100 IF: 1:100
Formulation	
Isotype	IgG
Storage Instruction	Store at -20°C for long term storage. Avoid freeze-thaw cycles.

TARGET INFORMATION

Gene ID	9928
Gene Symbol	KIF14
Uniprot ID	KIF14_HUMAN
Immunogen	Synthetic peptide taken within amino acid region 850-960 on human KIF14 protein.
Immunogen Region	850-960
Specificity	
Immunogen Sequence	



Immunohistochemistry of rat muscle with Anti-KIF14 primary antibody (STJ501537) at 1:100 dilution in Buffer. Section was treated with DAB and Haematoxylin stain. Magnification is at 40X.