

## Anti-ITPR2 antibody (100-150) (STJ501515)

STJ501515

### GENERAL INFORMATION

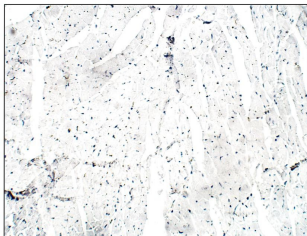
|                          |   |
|--------------------------|---|
| <b>Product Type</b>      | Primary antibodies  |
| <b>Short Description</b> | Rabbit polyclonal antibody anti-ITPR2 (100-150) is suitable for use in ELISA, Immunohistochemistry, Immunoprecipitation and Western Blot research applications. |
| <b>Applications</b>      | ELISA, IHC, IP, WB  |
| <b>Host/Source</b>       | Rabbit  |
| <b>Reactivity</b>        | Human, Mouse, Rat   |

### PRODUCT PROPERTIES

|                       |  |
|-----------------------|--|
| <b>Clonality</b>      | Polyclonal   |
| <b>Clone ID</b>       |  |
| <b>Concentration</b>  | 0.66 µg/µl   |
| <b>Conjugation</b>    | Unconjugated   |
| <b>Purification</b>   | Affinity Purified  |
| <b>Dilution Range</b> | WB: 1:500<br>DB: 1:10, 000<br>ELISA: 1:10, 000<br>IP: 1:200<br>IHC: 1:50-1:100 |
| <b>Formulation</b>    |  |
| <b>Isotype</b>        | IgG  |
| <b>Storage</b>        | Store at -20°C for long term storage. Avoid freeze-thaw cycles.                |
| <b>Instruction</b>    |  |

### TARGET INFORMATION

|                           |  |
|---------------------------|--|
| <b>Gene ID</b>            | <a href="#">81678</a>  |
| <b>Gene Symbol</b>        | <a href="#">Itpr2</a>  |
| <b>Uniprot ID</b>         | <a href="#">ITPR2_RAT</a>  |
| <b>Immunogen</b>          | Synthetic peptide taken within amino acid region 100-150 on rat Inositol 1, 4, 5-triphosphate receptor type 2 protein. |
| <b>Immunogen Region</b>   | 100-150  |
| <b>Specificity</b>        |  |
| <b>Immunogen Sequence</b> |  |



Immunohistochemistry of mouse tissue with Anti-ITPR2 primary antibody (STJ501515) at 1:50 dilution in Buffer. Section was treated with DAB and Haematoxylin stain. Magnification is at 20x.