

Anti-ITPR1 antibody (STJ501512)

STJ501512

GENERAL INFORMATION

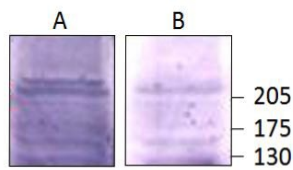
Product Type	Primary antibodies
Short Description	Rabbit polyclonal antibody anti-ITPR1 is suitable for use in ELISA and Western Blot research applications.
Applications	ELISA, WB
Host/Source	Rabbit
Reactivity	Bovine, Human, Monkey, Mouse, Rat

PRODUCT PROPERTIES

Clonality	Polyclonal
Clone ID	
Concentration	0.52-0.63 µg/µl
Conjugation	Unconjugated
Purification	Affinity Purified
Dilution Range	WB: 1:500 DB: 1:10, 000 ELISA: 1:10, 000
Formulation	
Isotype	IgG
Storage Instruction	Store at -20°C for long term storage. Avoid freeze-thaw cycles.

TARGET INFORMATION

Gene ID	3708
Gene Symbol	ITPR1
Uniprot ID	ITPR1_HUMAN
Immunogen	Synthetic peptide corresponding to unique amino acid sequence on human ITPR subtype 1 protein.
Immunogen Region	
Specificity	
Immunogen Sequence	



Western blot with Anti-ITPR1 Antibody (STJ501512) with A) peptide, B) SKNBE at 1:500 dilution in buffer. 150kDa band may be proteolytic product of ITPR1.

This product is suitable for in-vitro studies under the RESEARCH USE ONLY [RUO] licence. This product must not be used as for diagnostic or other medical purposes.
St John's Laboratory Ltd, Knowledge Dock Business Centre, University Way, London, E16 2RD | Tel: 0208 223 3081