

## Anti-ERN1 antibody (900-977) (STJ501495)

STJ501495

### GENERAL INFORMATION

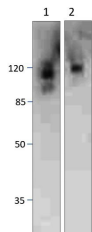
<b>Product Type</b>	Primary antibodies
<b>Short Description</b>	Chicken polyclonal antibody anti-ERN1 (900-977) is suitable for use in ELISA, Immunohistochemistry, Immunoprecipitation and Western Blot research applications.
<b>Applications</b>	ELISA, IHC, IP, WB
<b>Host/Source</b>	Chicken
<b>Reactivity</b>	Human, Mouse, Rat

### PRODUCT PROPERTIES

<b>Clonality</b>	Polyclonal
<b>Clone ID</b>	
<b>Concentration</b>	0.59-0.68 µg/µl
<b>Conjugation</b>	Unconjugated
<b>Purification</b>	Affinity Purified
<b>Dilution Range</b>	WB: 1:500 DB: 1:10, 000 ELISA: 1:10, 000 IP: 1:200 IHC: 1:50-1:100
<b>Formulation</b>	
<b>Isotype</b>	IgY
<b>Storage</b>	Store at -20°C for long term storage. Avoid freeze-thaw cycles.
<b>Instruction</b>	

### TARGET INFORMATION

<b>Gene ID</b>	<a href="#">2081</a>
<b>Gene Symbol</b>	<a href="#">ERN1</a>
<b>Uniprot ID</b>	<a href="#">ERN1_HUMAN</a>
<b>Immunogen</b>	Synthetic peptide corresponding to unique amino acid sequence within amino acid region 900-977 on human IRE1A protein.
<b>Immunogen Region</b>	900-977
<b>Specificity</b>	
<b>Immunogen Sequence</b>	



Western blot with Anti-ERN1 Antibody (STJ501495) of  
1) Rat cortex, 2) Mouse cortex at 1:500 dilution in buffer.