

Anti-IQSEC3 antibody (1100-1150) (STJ501485)

STJ501485

GENERAL INFORMATION

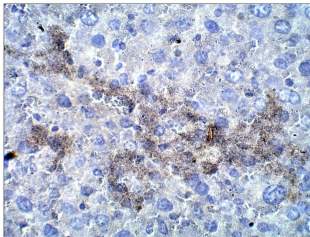
| | |
|--------------------------|--------------------------------------------------------------------------------------------------------------------------------------------------------------------|
| Product Type | Primary antibodies |
| Short Description | Rabbit polyclonal antibody anti-IQSEC3 (1100-1150) is suitable for use in ELISA, Immunohistochemistry, Immunoprecipitation and Western Blot research applications. |
| Applications | ELISA, IHC, IP, WB |
| Host/Source | Rabbit |
| Reactivity | Human, Mouse, Rat |

PRODUCT PROPERTIES

| | |
|----------------------------|-----------------------------------------------------------------|
| Clonality | Polyclonal |
| Clone ID | |
| Concentration | 0.5 µg/µl |
| Conjugation | Unconjugated |
| Purification | Affinity Purified |
| Dilution Range | WB: 1:500 ELISA: 1:10, 000 IP: 1:50-1:150 IHC: 1:150 |
| Formulation | |
| Isotype | IgG |
| Storage Instruction | Store at -20°C for long term storage. Avoid freeze-thaw cycles. |

TARGET INFORMATION

| | |
|---------------------------|--------------------------------------------------------------------------------------------------------------------|
| Gene ID | 440073 |
| Gene Symbol | IQSEC3 |
| Uniprot ID | IQSEC3_HUMAN |
| Immunogen | Synthetic peptide taken within amino acid region 1100-1150 on human IQ motif and SEC7 domain-containing protein 3. |
| Immunogen Region | 1100-1150 |
| Specificity | |
| Immunogen Sequence | |



Immunohistochemistry of rat liver with Anti-IQSEC3 primary antibody (STJ501485) at 1:50 dilution in Buffer. Section was treated with DAB and Haematoxylin stain. Magnification is at 40X.